

### Specifications

備注(Remark)

1. 材料(Material)

膠芯:PA9T/LCP+30%G.F UL94V-0, 顏色:黑色

Housing:PA9T/LCP+30%G.F UL94V-0, Color:Black

端子:黃銅

Contact:Brass

2. 特性(characteristics):

額定電流:3.00AMP

Rating Current:3.00AMP

接觸阻抗:20mΩ Max

Contact Resistance:20mΩ Max

絕緣阻抗:1000MΩ Min

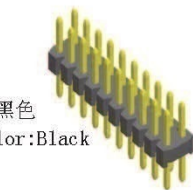
Insulating Resistance:1000 MΩ Min

耐電壓: AC 500V/分钟

Withstanding Voltage:AC 500V/Minute

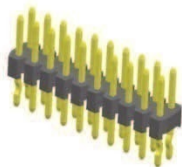
溫度範圍: -40° C to+105° C

Temperature Range: -40° C to+105° C



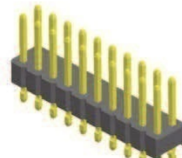
PH254-11PXXXXXXX1

L=A+B\*H



PH254-11PXXXXXXX2

L=A+B\*H



PH254-11CXXXXXXX1

L=A+B+2.5



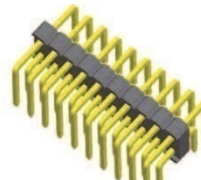
PH254-11RXXXXXXX1

L=A+B\*D+H+1.23



PH254-11RXXXXXXX2

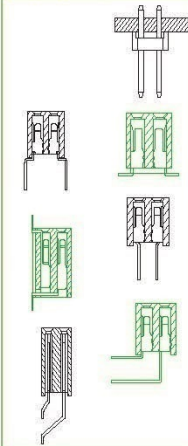
L=A+B\*D+H+1.23



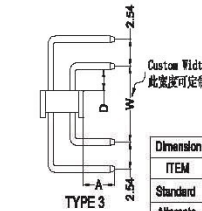
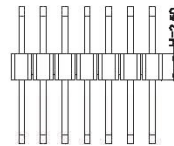
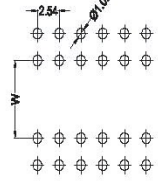
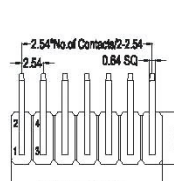
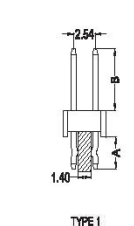
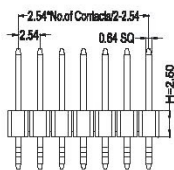
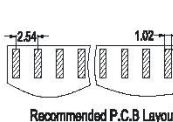
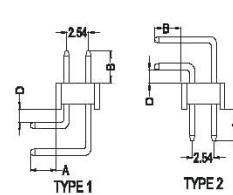
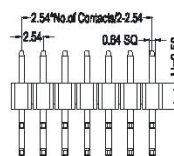
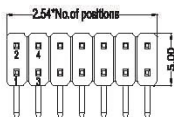
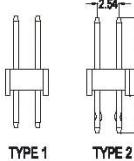
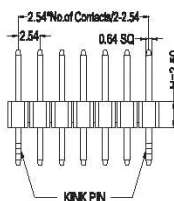
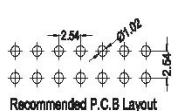
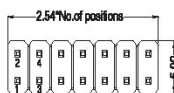
PH254-11RXXXXXXX3

L=2A+2D+H+2.5

Mating With/配對母座:



Dimension alternatives list			
ITEM	A	B	H
Standard	3.0	3.04,0.5,0.8,0.9	1.0 1.7 2.5 3.0
Alternate			1.5 2.0 2.8



Dimension alternatives list			
ITEM	A	B	H
Standard	3.0	3.04,0.5,0.8,0.9	1.0 1.7 2.5 3.0
Alternate			1.5 2.0 2.8

Dimension alternatives list				
ITEM	A	D	W	H
Standard	3.8	1.2	6.5	1.0 1.7 2.5 3.0
Alternate				1.5 2.0 2.8

PH254-11

X

XX

XX

XXX

X

X

**Contact Shape:**  
P: Straight  
R: Right Angle  
C: K Feet/Splint

**No. Of Pins Per Row**  
02~40P

**Contact Plating**  
Full Of Gold  
G0=0.8u"  
~  
G9=30u"  
S1=Ordinary Tin Plated  
S2=Matte Tin Plated  
S3=Tin-plated High-temperature

**Length Of Terminal**

**Packing**  
A: PE Bag  
R: Tape & Reel  
T: Tube  
D: Tube+CAP  
E: Tray

**Journal Number**  
1: Type1(without Post)  
2: Type2(with Post)  
3: Type3